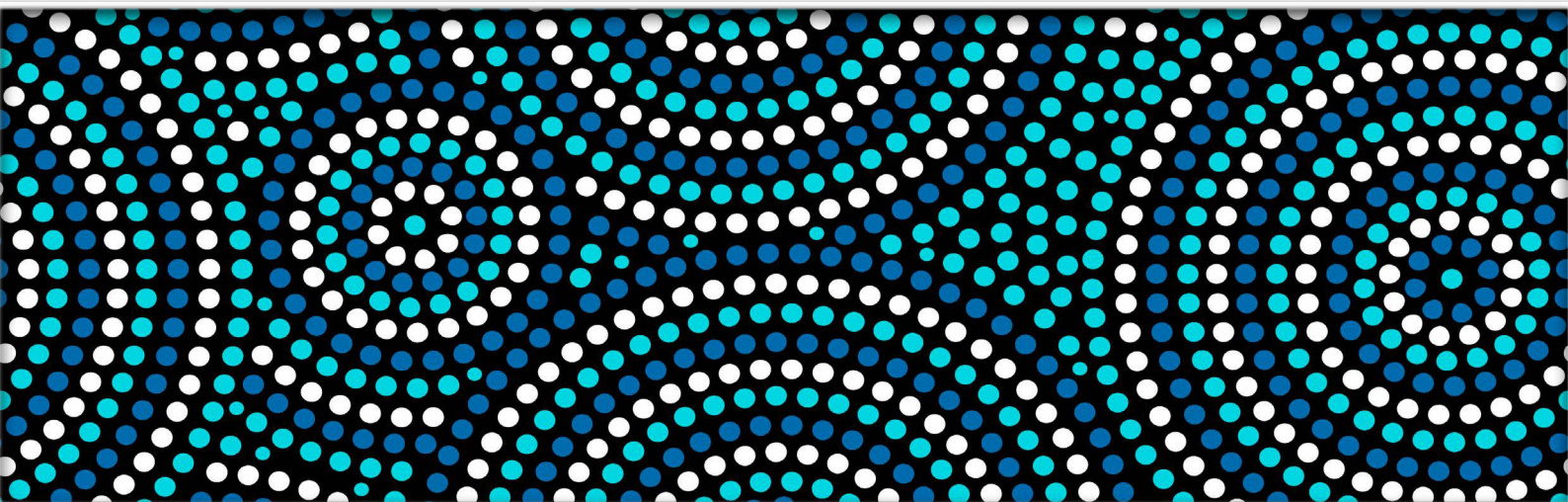




Capability Statement

2021





SAFETY is the most important value of our business - protecting the safety of our people, our clients and the environment in which we operate are our goals.

We believe that the company’s most valuable asset is our people.

We operate under a Zero Harm safety philosophy at home and at work.

Our Vision in working towards Zero Harm includes:

Zero injuries

Zero fatalities

Zero negative environmental impact

Zero tolerance towards unsafe behaviour

Zero plant or equipment incidents

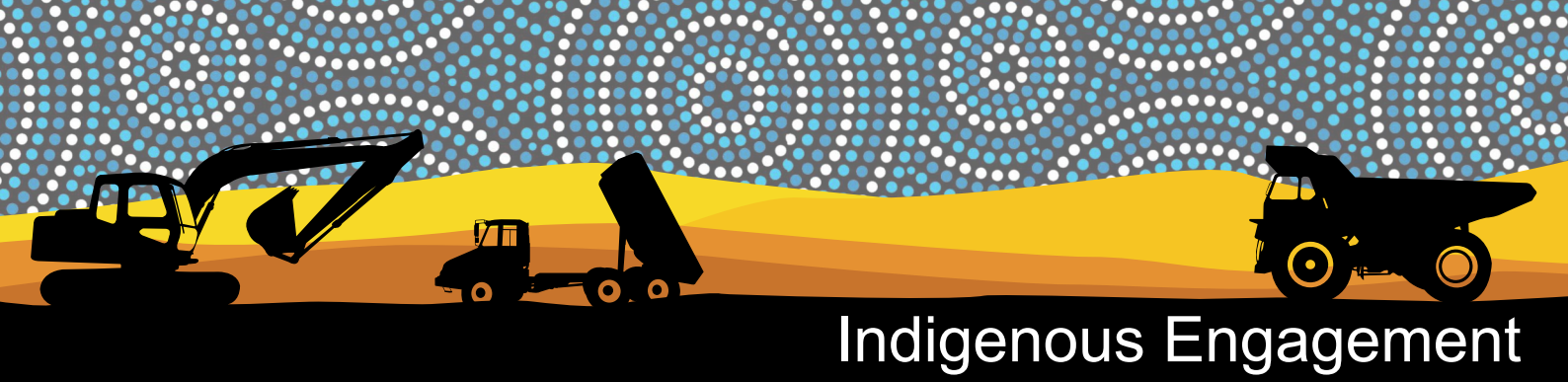


Marlee Resources have implemented **Safe Work Procedures** to ensure that our teams are performing their duties safely and effectively.

Marlee Resources also manage their “environmental footprint” using **Quality Management Systems** to ensure minimal impact to the environment and guarantee compliance on all projects.

We continually aim to improve by assessing, reviewing and testing not only our policies, procedures, but by also how we abide by our philosophy and how we continue to learn.





Indigenous Engagement

Our Traditional Land groups are **Noongar ,Ngadju, Yamatji and Wongi.**

Our Indigenous Engagement Plan outlines how we will ensure representation of Indigenous Australians in the wider community is matched by an equal representation of Indigenous Australians within the Project workforce.

This is achieved by implementing a range of appropriate alliances, recruitment, career development and retention initiatives.

Our Commitment to a sustainable future for Aboriginal Australians.

Marlee Resources is committed to employment, education, business development, social wellbeing and capacity building.

Objectives:

To increase the number of Indigenous employees employed by us.

To provide appropriate development opportunities for Indigenous employees to establish reporting and evaluation mechanisms for the Indigenous employment strategy.

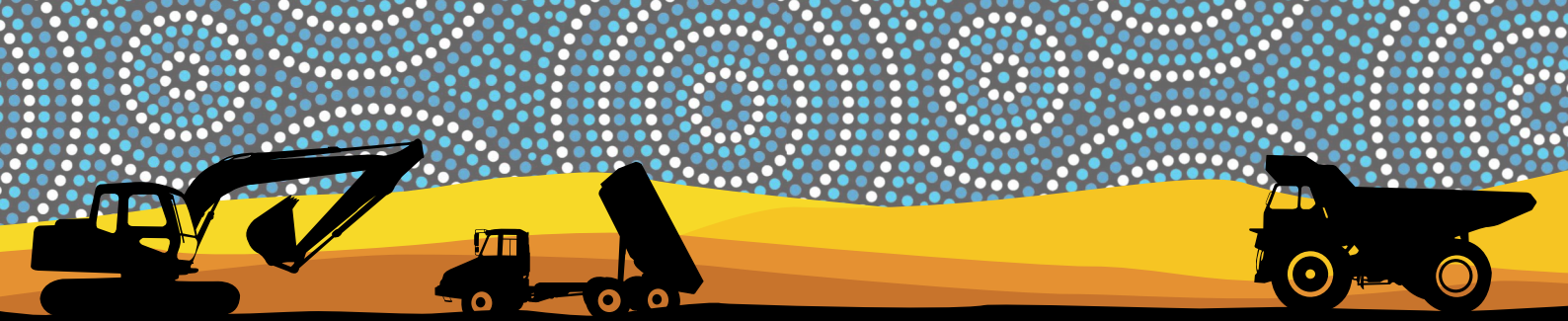
To develop practices that demonstrate an inclusive and welcoming environment for Indigenous employees and prospective employees.

To raise awareness among non-Indigenous Australian employees of the cultural issues that may affect the employment of Indigenous people.

Create traineeships and long-term job opportunities for Indigenous employees.

We understand how to engage Aboriginal people on country and in regional communities through innovative, substantial job creation and enterprise development.





Core Services

At Marlee Resources we provide specialist equipment rental, diesel rebuild / maintenance and project support to the government and resources sector.

Listed below are our core services and please contact us for detailed information on rental fleet availability and services capability.

- **Mobile Plant Hire**
- **Mobile plant repairs**
 - Field service Breakdowns and fault Diagnostics
 - Preventative maintenance
- **Component Rebuilds**
 - Engines - Proven experience in CAT, Cummins & MTU
 - Torque converter, Transmissions, differentials and final drives.
 - Hydraulic pumps and cylinders.
- **Mobile Plant Maintenance Consultancy**
 - Implementation of maintenance plans, strategy's and asset management to ISO 550001
- **Mobile dewatering**, - Hire, design, installation and maintenance.
- **Diesel Driven Power generation** - Hire, Design and installation.
- **Labour Hire** - Operators, Mobile plant Mechanics, Mobile Plant Serviceman, dewatering Operators.

Experience with all OEM equipment repairs, maintenance requirements and strategies.

Established strategic alliances with experienced service providers.

In addition to our team we have close bonds with numerous service providers and can offer experience in procurement, logistics, asset management, major equipment repairs and software application services.





Tenay Dimer



Director

tenay@expertechcorp.com.au

0477 101 010

Scott Stringer



Director

scott@expertechcorp.com.au

0447 895 602

